

DONYA

Pendant lamp

Installation manual



ANOUR 

Contact@anour.dk
Valhojs Alle 180, 2610 Rodovre,
Denmark

www.anour.dk

DONYA - PENDANT LAMP

Installation manual

SAFETY INSTRUCTIONS:

Important! Before commencing the installation, disconnect the main cable from the power supply - remove fuse or turn switch to "OFF"!

1. Installation should be carried out in accordance with the local safety regulations. If you have any problems with the electrical installation, contact an electrician.
2. In order to prevent damage, please check walls for cables before drilling holes.
3. Please ensure that all electrical connections are securely inserted and tightly fastened. Please secure all connections after changing or adjusting lamps. Screwed connections must ideally be tightened after 20 minutes of use.
4. Please do not place objects on the luminaire (e.g. for decorative purposes) if they were not delivered with the system.
5. The luminaire may get very hot when in use. Please allow the fixture to cool down before commencing work.
6. Do NOT change the lightbulb while the fixture is switched on.
7. Please use the lamp in accordance with its intended purpose only
8. We reserve the right to make technical alterations.

Fitting: **GU10 (max. 6 Watt)**

The glass used for this lamp is hand-blown. Only 1st. quality has been chosen. Air bubbles and variations in thickness and colour are normal.

Stone shades used for this lamp are handmade from a natural stone. There are some variations in thickness and color.

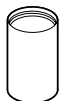
Our products are for indoor use only. Check on a regular basis that the cord and other parts are not damaged. In which case, the product must not be used. Save these instructions for future use. (February, 2024)



Parts (included in the package):



x1
pair of
gloves



x1
lamp body
96 mm x Ø60 mm



x1
lamp base
+ 3,5m textile cord black
100 mm x Ø60 mm

Alternate lamps shades

(depending on your order):



Reflector
10mm x
Ø 42 mm



Solar shade
35mm x
Ø 260 mm



Glass sphere
Ø 150 mm



Moon shade
50mm x
Ø 120 mm



Trapeze shade
50mm x
Ø 110 mm

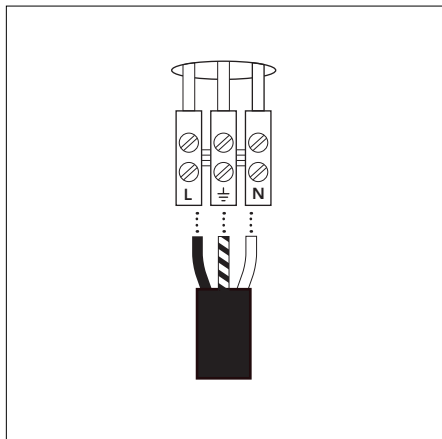


Cylinder shade
50mm x
Ø 120 mm

Ceiling cup not included
Light bulb not included

DONYA - PENDANT LAMP

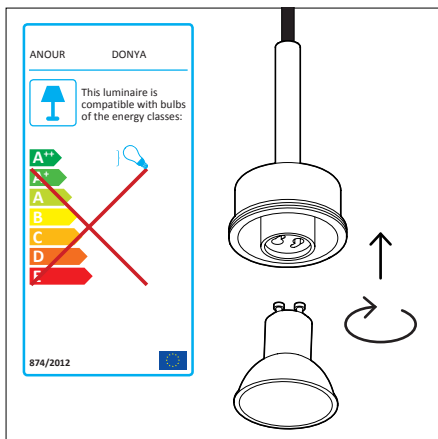
Installation manual



1. Please use the attached gloves while handling the lamp in order to protect the lamp finish.

Adjust the length of the textile cable to fit your requirements. Lead the textile cable into the cable connector.

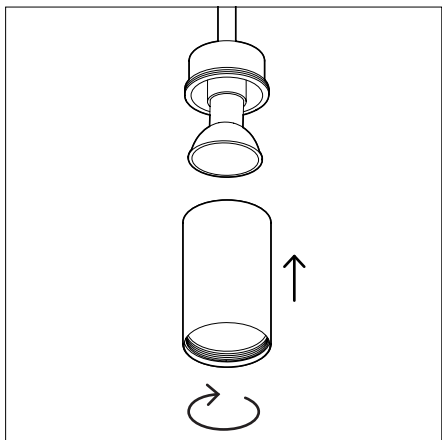
Ceiling cup is not included



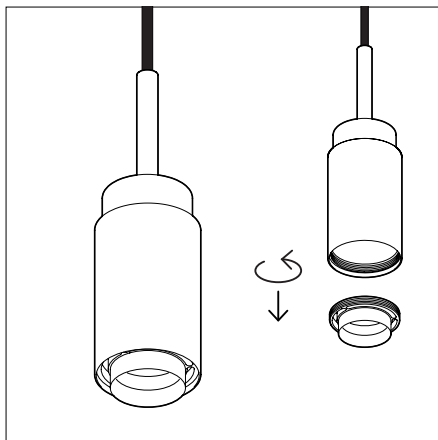
2. Place the GU10 light bulb in the socket as illustrated.

Use max. 6 watt bulb.

GU10 light bulb is not included



3. Connect the lamp body with the base as illustrated. Fixate it by turning it all the way clockwise.

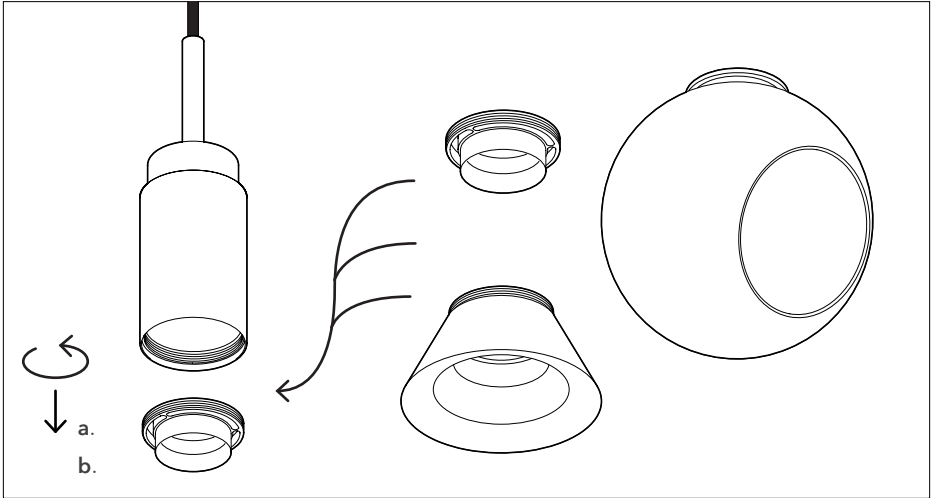


Unless you ordered a different lamp shade, lamps is provided with the detachable anti-glare reflector.

If you wish so, you can remove this reflector by unscrewing it counterclock-wise.

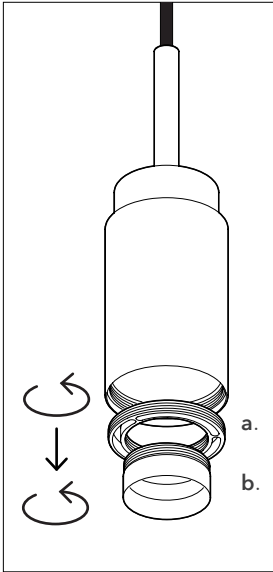
Be aware of sharp edges of the threading.

OTHER PENDANT SHADE VARIANTS



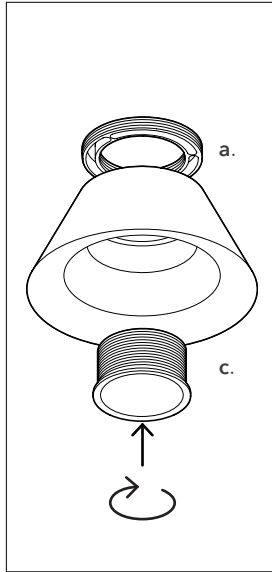
There are multiple pendant shades available.

Always use gloves to prevent cutting from sharp threading and to protect the lamp finish. Carefully unscrew the mounting ring (a.) + reflector (b.) and replace them with your shade. If you have a **stone shade**, please proceed with the following steps:

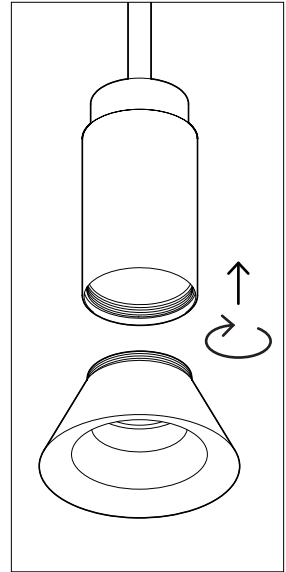


1. Unscrew the mounting ring (a.) + reflector (b.) from the lamp body and separate them from each other.

Be aware of sharp edges of the threading.



2. Screw the mounting ring (a.) together with the stone shade (c.), fixing the stone shade.



3. Attach the stone shade to the cylinder as illustrated. Fixate it by turning the shade clockwise. Turn it all the way in.